



Gear Day – May 5th 2017

Paolo Cominetti PTS Business Unit - R&D



Bonfiglioli: 60 years of evolution thought product innovation

A global player

• Revenues	785 M€
• Employees	~3700
• Country of Presence	16
• Production Facilities	14

Our 4 strategic pillars



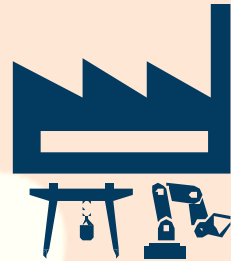
Full liner for multiple applications



Our impact

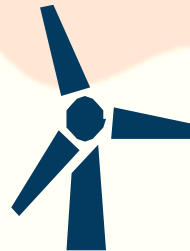


Serves more industries and applications than any other drive manufacturer



Over 1 million

gearboxes and gearmotors manufactured per year



Market Leader

1 in 3 wind turbines has a Bonfiglioli gearbox



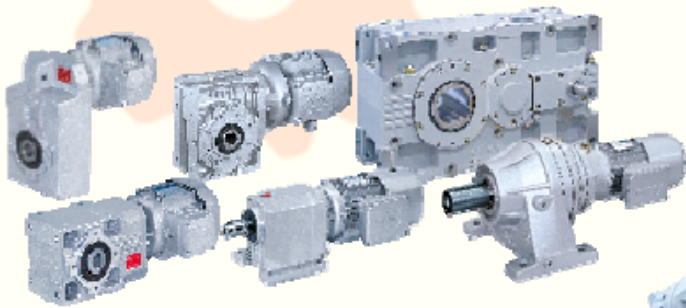
Widest range

of final drives on the market



Our Strength: a completely integrated product portfolio

Power + Drive + Control



Unlimited possibilities
Unlimited configurations for any type of application in any market

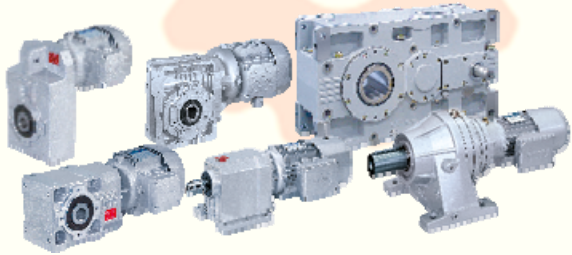
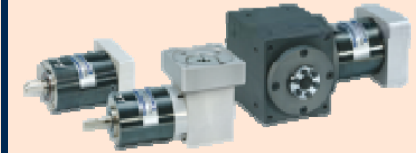


Product Portfolio



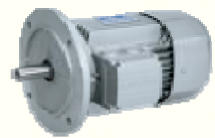
PLANETARY GEARBOXES

**PRECISION GEARBOXES AND
GEARMOTORS**



**LIGHT DUTY (BEVEL, HELICAL AND WORM)
HEAVY DUTY (BEVEL & HELICAL)**

SERVO MOTORS



AC/DC ELECTRIC MOTORS



**AC/DC
MOTOR DRIVE**

Bonfiglioli support into MetAGEAR Project



	OR Target	Bonfiglioli support
Tools & Methodology	OR2: Gearbox NVH optimization with parametric models	Gearboxes, test bench, personnel, GB technical data
Materials & surface treatments	OR3: Gear surface treatments & coatings	Gears, comparative life/ durability tests on full gearbox
Process technologies	OR 4: Robotized assembly process with high flexibility	Gearboxes, GB assembly doc., support for tests



Thank you



Bonfiglioli

Forever Forward

